

Biotinylated Human Claudin 18.2 Protein-VLP

Cat. No. CLD-HE1822B



Description

Source	Recombinant Biotinylated Full length Human Claudin 18.2 Protein-VLP is expressed from HEK293.
	It contains Met1-Val261 (It may have cross reaction with anti-His antibody).
Accession	P56856-2
Molecular Weight	The target protein has a predicted MW of 29 kDa.
Endotoxin	Less than 1 EU per µg by the LAL method.
Purity	> 95% as determined by HPLC

Formulation and Storage

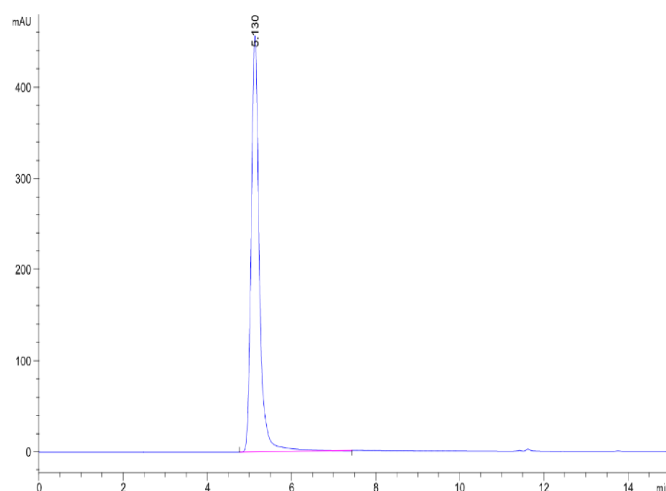
Formulation	Supplied as 0.22µm filtered solution in PBS, 300mM L-Arginine (pH 7.4).
Storage	Valid for 12 months from date of receipt when stored at -80°C. Recommend to aliquot the protein into smaller quantities for optimal storage. Please minimize freeze-thaw cycles.

Background

Claudin18(CLDN18) belongs to the large claudin family of proteins, which form tight junction strands in epithelial cells. CLDN18 is specifically expressed in the stomach and lung. CLDN18 has two alternatively spliced variants, CLDN18.1 and CLDN18.2. Isoform 2 (Claudin 18.2) is abundant in gastric tumors.

Assay Data

SEC-HPLC

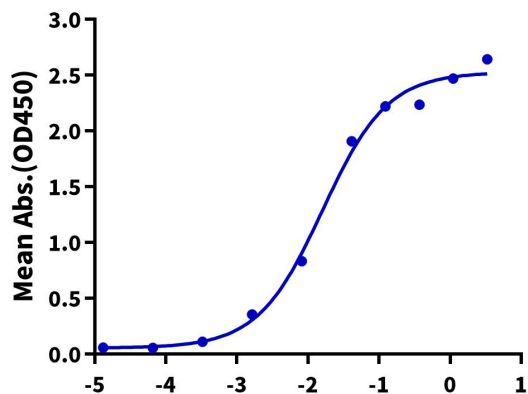


The purity of Biotinylated Human Claudin 18.2 VLP is greater than 95% as determined by SEC-HPLC.

ELISA Data

Biotinylated Human Claudin18.2 VLP ELISA

0.5µg Biotinylated Human Claudin18.2 VLP Per Well



Immobilized Biotinylated Human Claudin18.2 VLP at 5µg/ml (100µl/well) on the streptavidin precoated plate (5µg/ml). Dose response curve for Anti-Claudin18.2 Antibody, hFc Tag with the EC50 of 16.1ng/ml determined by ELISA (QC Test).

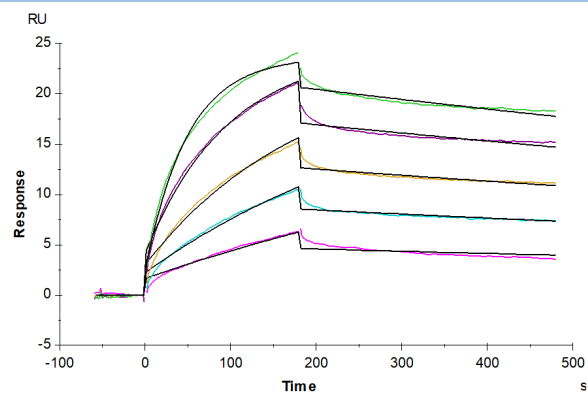
SPR Data

Biotinylated Human Claudin 18.2 Protein-VLP

Cat. No. CLD-HE1822B



Assay Data



Biotinylated Human Claudin18.2 VLP captured on CM5 Chip via Streptavidin can bind Anti-Claudin18.2 Antibody with an affinity constant of 1.28 nM as determined in SPR assay (Biacore T200).